

The art of decoration

Artists, often Greek, richly decorate homes and public spaces.

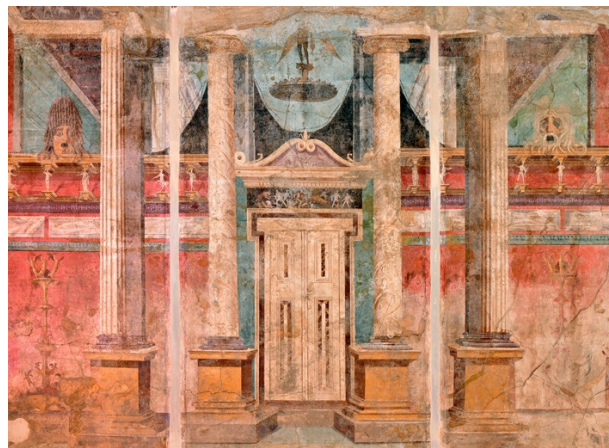
The main decorations are:

- **Mosaics:** decorations made of tiny tesserae (=small cubes of colored stones), generally found on the floors of houses.



Museo archeologico Napoli

- **Frescoes:** colorful paintings on walls or sometimes ceilings.



Museo archeologico Napoli

- **Sculptures:** Statues often made of marble, sometimes bronze, and bas-reliefs (sculptures on flat surfaces), usually in marble.



Hercules

Museo archeologico Napoli



The She-wolf of Rome

Capitoline Museum Roma

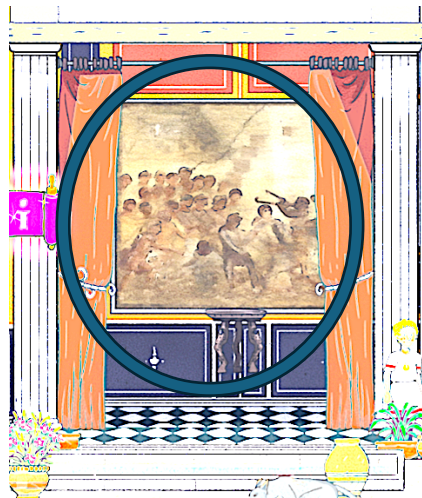
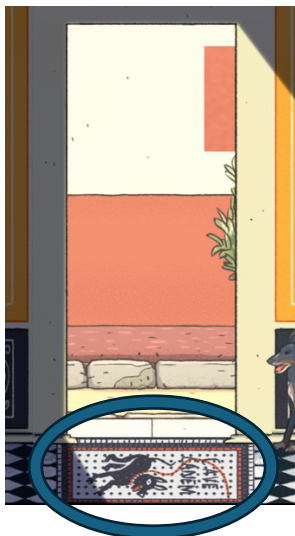


Sacrificial Scene

Altar of Vespasian, Pompeii

These decorations represent scenes from **daily life** or **mythology**.

A little exercise: The images below, copied from the *Domus Sabinus* in the game *Danger in Pompeii*, show three types of decorations. Indicate whether they are a mosaic, a fresco, or a sculpture.



Mosaics : *Side quest on the wall of the House of the Faun, Septentrionalis*

What are the small stone cubes called? the

List the following actions in order of production, from 1 to 4:

... Remove excess glue

... Prepare the design.

... Cut out the small cubes.

... Glue the small cubes onto the drawing.

Point of interest right next to the quest

Indicate your two favorite mosaics and explain why they are your favorites:

.....
.....

Frescoes: *Quest "Perfect bread at the Pistrinum" including 3 points of interest in the Septentrionalis*

Circle the correct answers:

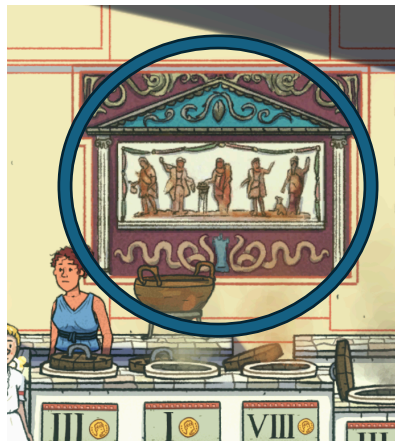
- A fresco is a painting / a sculpture / a vase.
- Frescoes are found on the floor / on the walls / on the ceiling.
- The paint is absorbed by the canvas / wet plaster / dry wall on which the fresco is drawn.

Give two examples of what the frescoes seen in the game's *points of interest* represent:

.....

Bonus: Where is this fresco located, and what does it represent?

.....



Sculptures :

Sculptures point of interest on the forum:

Indicate your two favorite sculptures and explain why they are your favorites:

.....

.....

For the *sculptures below, copied from the game*, indicate if they are statues (S) or bas-reliefs (B-R), whether they are made of marble (M) or bronze (B), and what they represent (e.g., emperor on horseback, sacrificial scene, politician, Apollomand Diana).



.....

.....

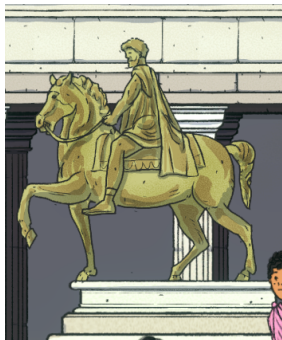
.....



.....

.....

.....



.....

.....

.....



.....

.....

.....